

Cards and transponders

Card systems

In addition to RFID readers, BALTECH also supplies you with cards and key fobs for the following card systems:

- MIFARE DESFire
- MIFARE Classic
- MIFARE Plus

For a smooth implementation in the project, we offer a range of complementary services.



Services

Card system consulting

You're starting out without a predefined card system? Then we help you pick the right one – based on your requirements and our many years of experience with all common systems and variants.

Developing the card structure

Tailored to your project, we develop the card structure. It covers the allocation of card memory to the individual applications (e.g. access control, canteen payment, etc.), keys and authorizations for access to the applications, and the application data itself. We not only consider applications that are currently planned, but also potential future applications. This saves you the hassle of reformatting issued cards when implementing an additional application later.

Best-practice security

To protect your sensitive application data, we assign each application a unique key. This means for you:

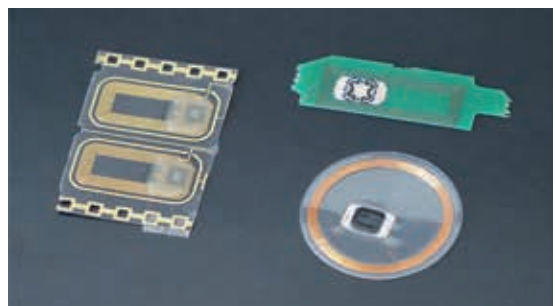
- Each application provider only needs to know the key for their application, i.e. they cannot access other data on the card.
- If a key is compromised, the security of all other applications remains unaffected. And you can narrow down who is responsible for a compromised key.

Formatting cards

We apply the card structure to the cards and print the card number on request. We're also happy to provide you with the card structure in the form of a "job file". Using the job file and our free tool *BALTECH Card Formatter* you can do the formatting safely on site, e.g. when issuing new cards later. No expert knowledge required.

Custom transponders

If needed, we develop and produce individual transponders according to your requirements, e.g. for difficult installation environments. We're happy to provide you with an offer upon request.



Order & further information

- To place your order, please contact us at sales@baltech.de or +49 0811-99881-0.
- For details about BALTECH Card Formatter, please refer to the *Card Formatter data sheet*.
- For more information & best practices on card formatting, please visit docs.baltech.de/format-cards-best-practices

BALTECH AG
Lilienthalstrasse 27
85399 Hallbergmoos
Germany

Mail: info@baltech.de
Website: www.baltech.de
Phone: +49 (811) 99 88 1-0
Fax: +49 (811) 99 88 1-11