

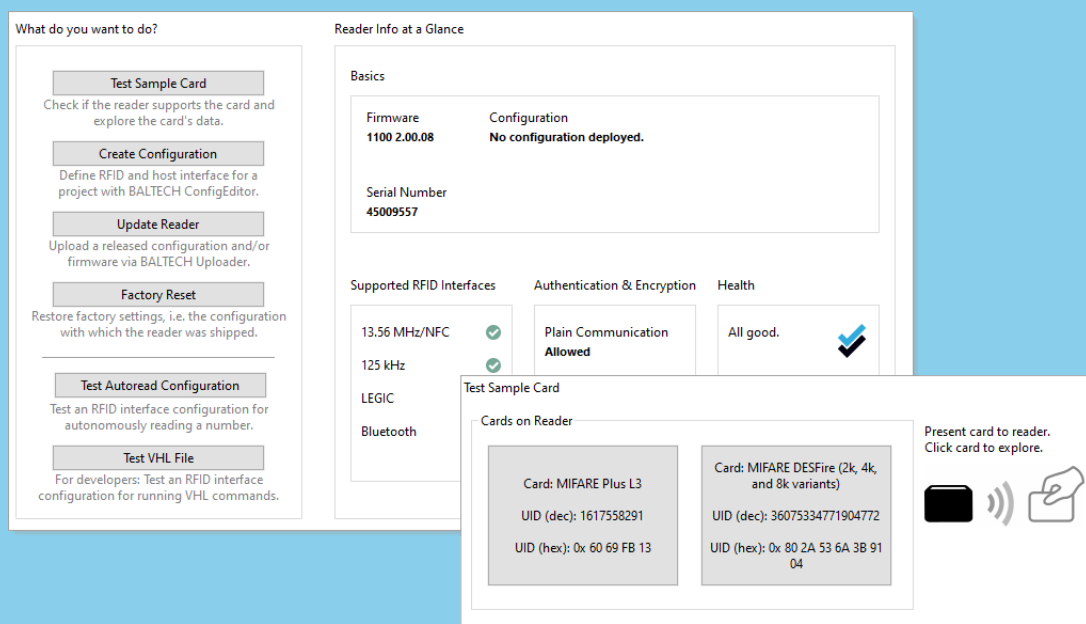
BALTECH ToolSuite

Manage readers and configurations throughout your project lifecycle

BALTECH ToolSuite is a collection of 3 tools for the management of BALTECH readers. Together, they offer all the features you need during an RFID project: from initial functionality testing and card analysis to configuration setup and deployment.

ID-engine Explorer

The perfect starting point to try out a BALTECH reader and its functionality. In later project phases, you can use *ID-engine Explorer* for testing and maintenance.



Features

- Access full reader info, e.g., serial number, firmware version, supported RFID interfaces, deployed configuration, and reader health.
- Test sample project cards and return UIDs (serial numbers) for all supported card types.
- Analyze the card structure of MIFARE DESFire/Classic/Plus, and LEGIC cards.
- Test the reader's RFID interface as configured with *ConfigEditor* (see below).
- Factory-reset the reader to restore the configuration with which the reader was shipped.

ConfigEditor

Create, test, release, and maintain configurations. A wizard helps you set up the configuration for your project, followed by a workflow overview that guides you through to a ready-to-deploy config.

The screenshot displays the ConfigEditor interface with three main sections:

- Autoread Wizard:** Contains three columns of options:
 - Host Interface:** Radio buttons for USB, RS-232, Ethernet, Wiegand, OSDP (selected), and Read all.
 - RFID Interface:** Radio buttons for MIFARE DESFire (selected), MIFARE Classic, MIFARE Plus, LEGIC, iClass, HID Prox, HITAG, and Read all.
 - Number to Read:** Radio buttons for UID (serial number) and Programmed card number (selected).
 - LED:** A checked checkbox for "I have ACCESS200 readers and want to dim the red LED".
- Your Workflow:** A three-step process:
 - 1. Complete configuration:** Includes a "To test it:" step with a button "Test Autoread Configuration" and a "To release it:" step with a button "Release & Export Configuration".
 - 2. Test configuration:** Includes a button "Test Full Configuration with Host System".
 - 3. Prepare for deployment:** Includes a button "Release & Export Configuration".
- Configuration Components:** A list of components including "Administrative Information", "Autoread MIFARE DESFire Number", and "Keyboard Emulation". Below this is a section for "Administrative Information" with fields for "Version" (01) and "Name", and checkboxes for "Support Legacy Firmware Versions" and "Package with Specific Firmware Version".

Features

Create Configurations

- Configure the RFID interface for “Autoread” mode, i.e., to autonomously read and convert UIDs (serial numbers) or programmed card numbers from a file, sector, or segment of the card.
- Configure the host interface including output format.
- Configure feedback to the card holder: Switch the beeper on or off, and customize the LED, e.g., to adjust intensity and pick from a variety of colors.
- Create blocklists or allowlists for autonomous operation to limit the range of numbers accepted by the reader.
- All common card types and host interfaces are supported out of the box. For specific requirements, you can order and import custom configuration components.

For developers:

- Configure the RFID interface for our macro command set *VHL (Very High Level)* to write code independent of your card type (learn more in the data sheet “*Cross-product properties*”).
- Configure encrypted host-reader communication with AES-128 (or PKI for Ethernet readers).

Test & release

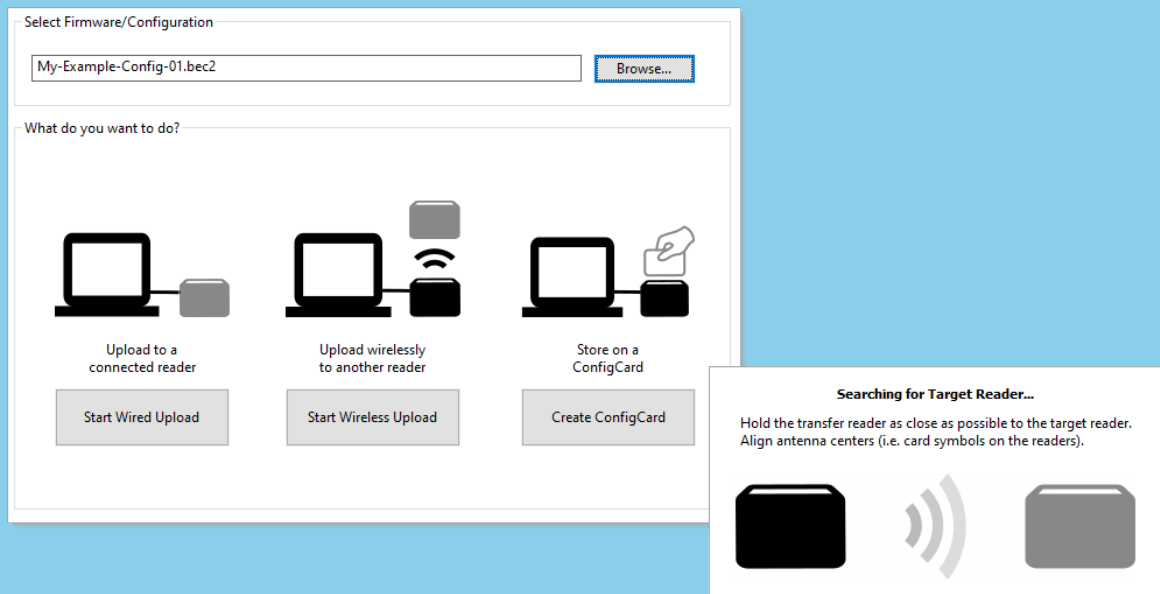
- Test “Autoread” configurations right in *ConfigEditor* and configure the reader for tests with your host system or *ID-engine Explorer* (see above).
- Release configurations to freeze a defined version and export an end-to-end encrypted file for productive deployment with *Uploader* (see below).
- Store configurations on ConfigCards for contactless deployment.

Manage

- Package configuration & firmware to ensure consistent behavior across all readers in a project.
- Update configurations, e.g., to add support for another card type.
Automatic versioning helps you keep track of different configuration states.
- Copy a configuration to use it as a template for a different project.

Uploader

The tool for your technicians: Deploy configurations and firmware updates to productive readers – conveniently via various interfaces.



Features

- Wired upload of configuration and/or firmware via USB, RS-232, or Ethernet
- Wireless upload of configuration and/or firmware via NFC (requires a transfer reader connected to the PC)
- Store a configuration exported from *ConfigEditor* on a ConfigCard for contactless deployment (requires a transfer reader connected to the PC).

System requirements

- Windows 10 or above

Download, documentation & support

- [Download ToolSuite](#) for free from our website.
- For our full documentation, visit docs.baltech.de. We recommend you start here: docs.baltech.de/quick-start
- For personal support, please contact us at support@baltech.de or +49 0811-99881-0.